

# ADDICTIVE DESERT DESIGNS

## 2011 – Current Ford SuperDuty Stealth Side Steps Installation Instructions

### PREPARATION

1. Disconnect the negative terminal on the battery. Park the vehicle on level ground and set the emergency brake.
2. We recommend reading through the installation instructions in whole before performing the work.
3. You will need the following tools:
  - a. 13mm Socket
  - b. Ratchet
  - c. 7/32" Allen Wrench or Allen Key Socket
  - d. 9/16" Wrench
  - e. Wire Crimpers
  - f. Utility Knife
  - g. Zip Ties

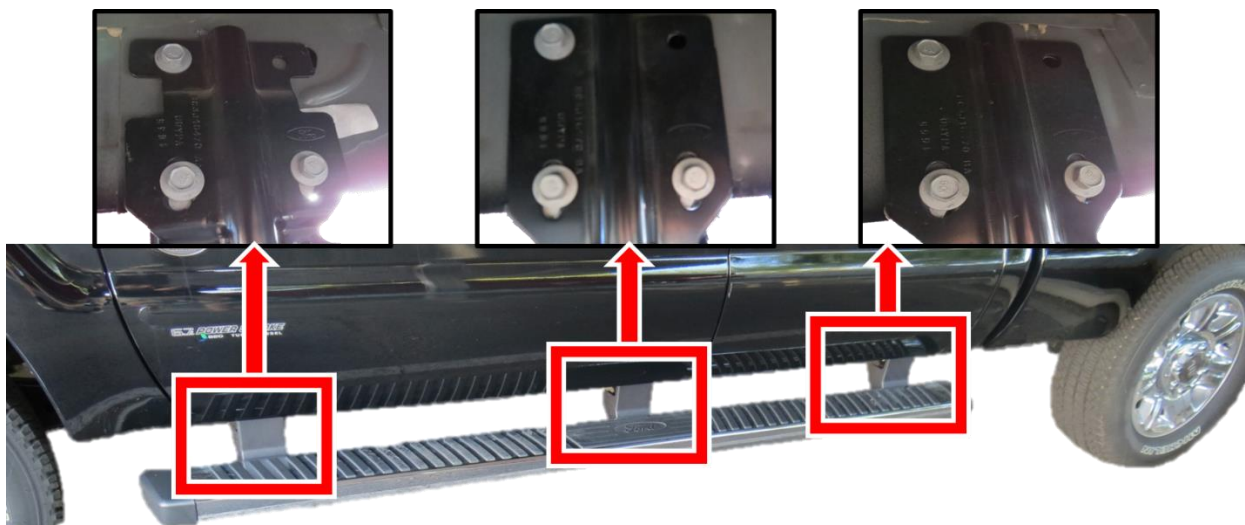
*Note: This installation requires 2 people for best results*

4. Included in Kit:

- 24 – Button Head Bolts – 3/8"-16 x 1"
- 24 – Flat Washers – 3/8"
- 12 – Extruded U-Nuts – 3/8"
- 12 – Nylon Locking Nuts – 3/8"
- 1 – LED Lighting Harness

### REMOVAL

1. Remove the 13mm bolts that hold your OEM Side Step to your truck. There are 3 bolts per mount and 3 mounts per step. Remove the OEM Side Step from your vehicle. (Fig A)

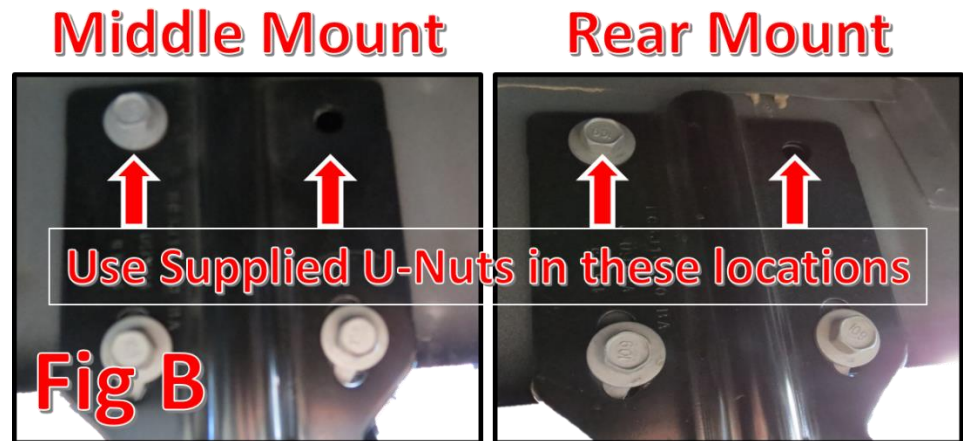


**Fig A**

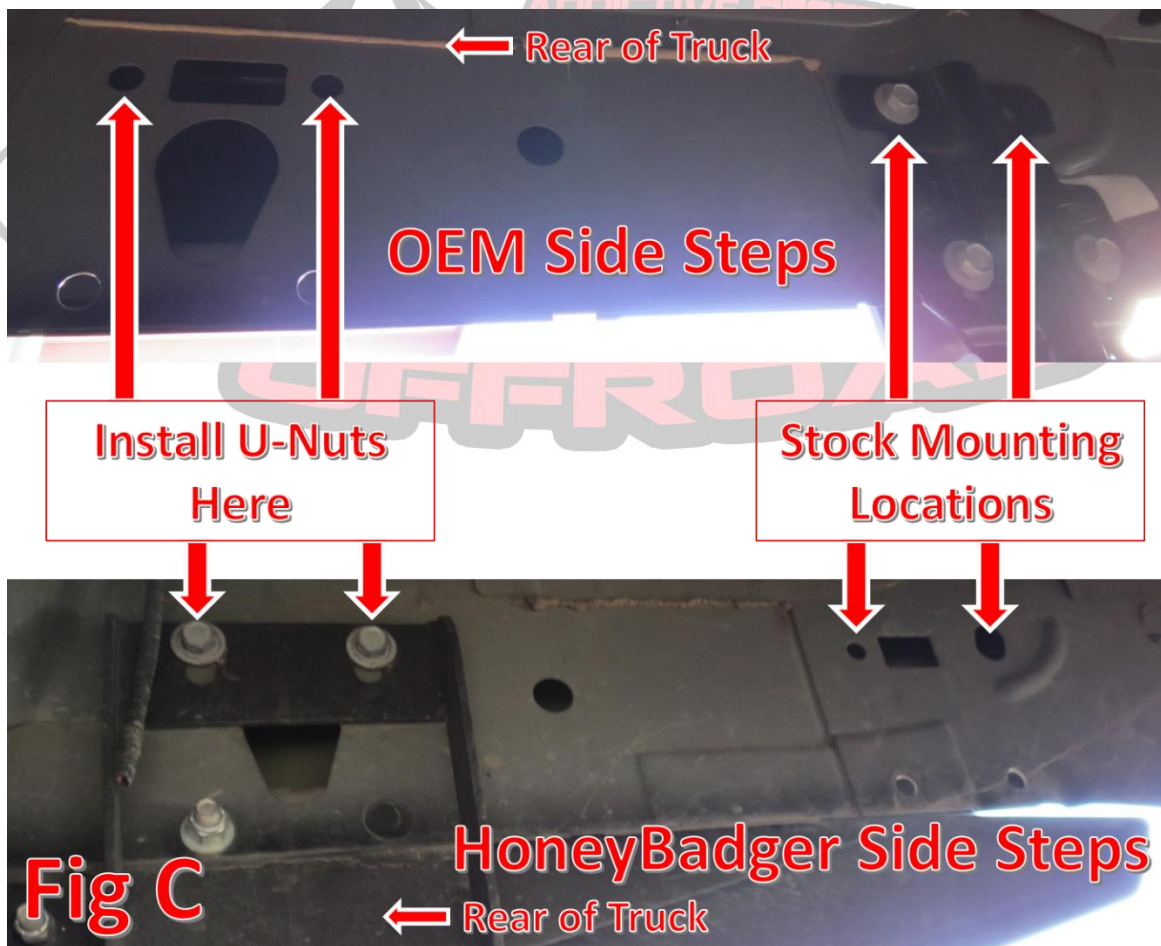
2. Repeat Step 1 on opposite side of vehicle.
3. Prepare to install your new A.D.D. Stealth Side Steps.

## INSTALLATION

1. Remove the stock nut clips from their holes.
2. For the middle and rear side step mounting locations, put the supplied 3/8" U-nuts (x4) in the top two stock mounting holes. (Fig B).

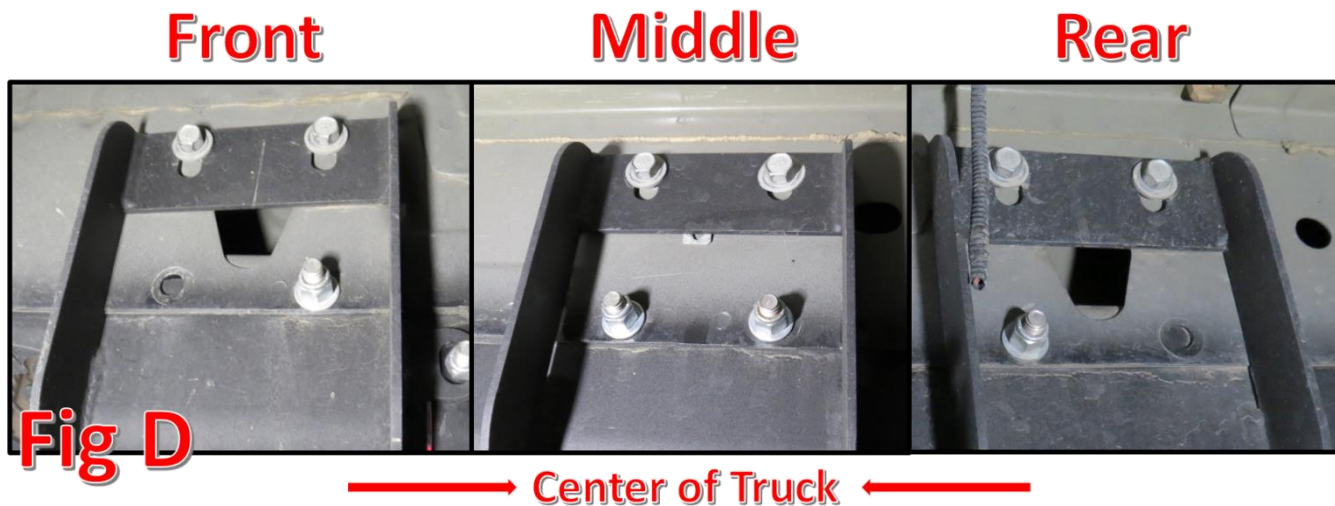


3. For the front mounting location, we use the next set of holes towards the rear of the truck. (Fig C) Put the supplied 3/8" U-nuts (x2) in the top two holes.



4. Hold the ADD Side Step in place and loosely install the supplied 3/8" button head bolts (x6) into the newly installed U-nuts.
5. For the front and rear mounts, install one 3/8" button head bolt, 3/8" washer, and 3/8" locking nut in the bottom hole closer to the center of the truck. (Fig D)

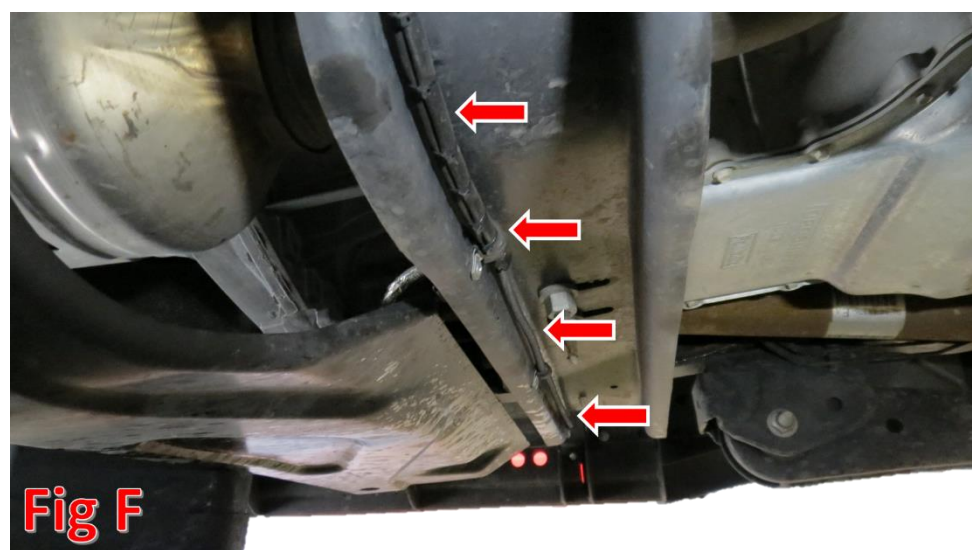
- For the middle mount, install two 3/8" button head bolts, 3/8" washers, and 3/8" locking nuts in each of the bottom holes. (Fig D)



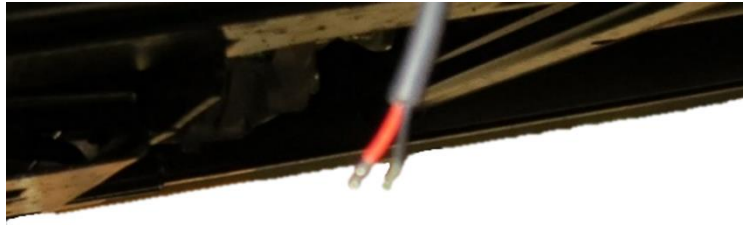
- Align the Side Step so that it sits straight in relation to the bottom of the truck's body. This is where a second person will come in handy.
- Go back and tighten every bolt to the manufacturer's specifications.
- Repeat Steps 1-8 on the other side of the vehicle.
- Lay out the supplied LED Lighting Harness so that the single end is on the driver side of the vehicle. (Fig E)



- Pass the harness underneath the vehicle and use zip ties to hold it in place on the transmission cross member. (Fig F)



12. On the driver side, take the red and black wires coming from the LED Harness and use the butt connectors attached to the wires to connect them to the red and black wires coming from the side step. Connect red to red and black to black. (Fig G)



13. On the passenger side, take the red and black wires with butt connectors attached to them and connect them to the red and black wires on the passenger side step. (Red to Red, Black to Black)



**Fig G**

14. Pull the plastic door sill and two kick panels on the passenger side of the truck. There are no tools necessary for this step. They pull out by hand. (Fig H)



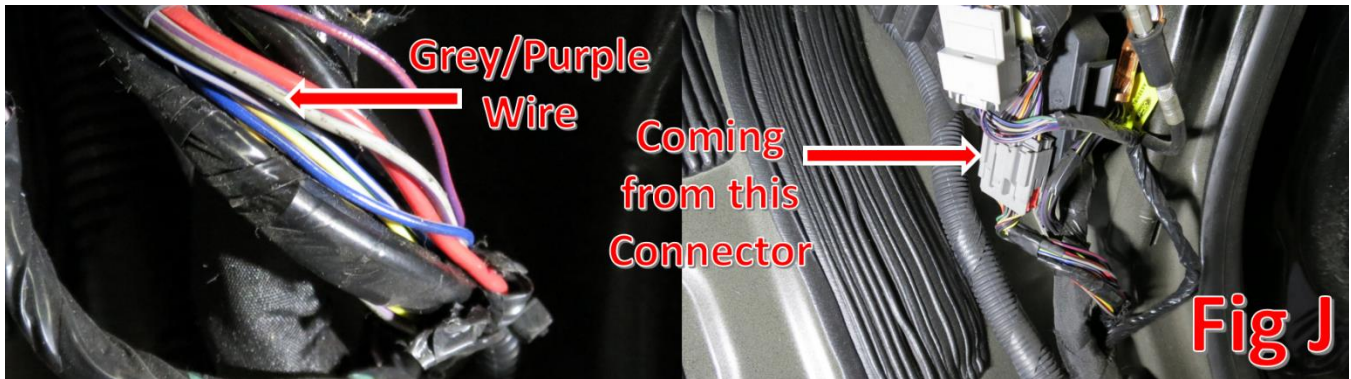
**Fig H**

15. Lift the carpet on the passenger side of the truck to find the rubber grommet referred to in Fig I. Take it out, cut a slit just big enough to feed the remaining wires in the harness through, and reinstall it.

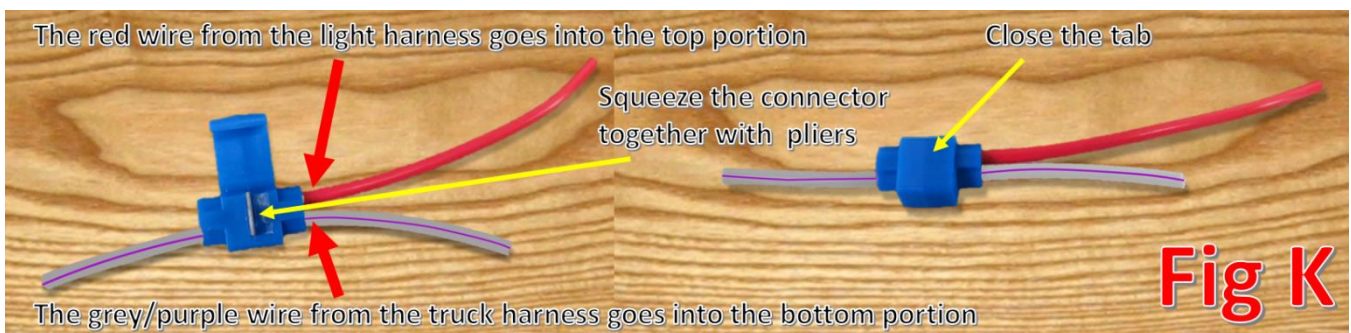


**Fig I**

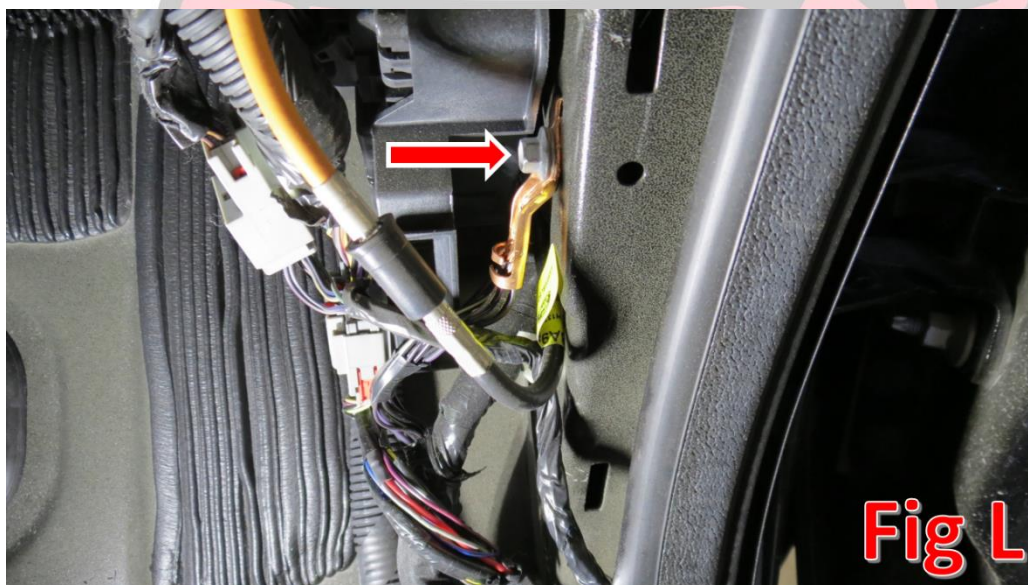
16. Feed the remaining Red and Black wires in the LED Harness through the newly cut hole in the rubber grommet.
17. Find the wire (Grey with a Purple stripe) coming out of the connector referenced in Fig J.



18. Using the supplied splice, connect the red wire in the LED Harness to this grey/purple wire. (Fig K).



19. Loosen the bolt referenced in Fig L, slide the ground (Black) wire terminal under that bolt, then retighten it.



20. Reinstall the panels removed in Step 13.
21. Reconnect your battery terminals and make sure the LED Lights turn on when the door is opened.
22. Stand back and enjoy your A.D.D. Stealth Side Steps.
23. Check and re-tighten if needed, all mounting bolts after 100 miles and periodically thereafter.



For Additional Support or Technical Questions,  
Please Call 480.671.0820 or  
Email [info@addictivedesertdesigns.com](mailto:info@addictivedesertdesigns.com)

Addictive Desert Designs  
4840 E. Jasmine Street Suite 112  
Mesa, AZ 85205  
[www.addictivedesertdesigns.com](http://www.addictivedesertdesigns.com)